

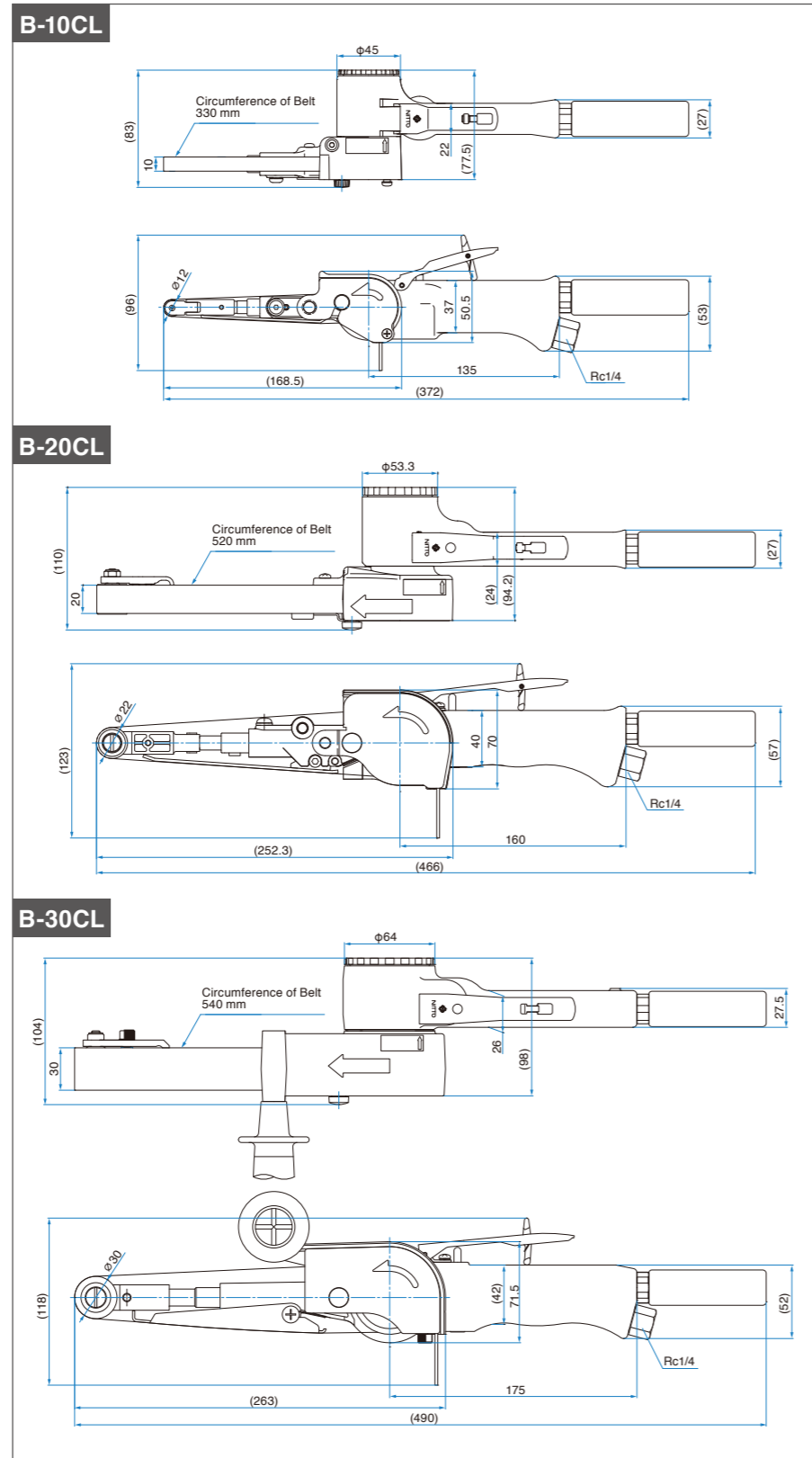
Abrasive Belt (Optional Accessory)

Belt Size 10 mm x 330 mm			
Grit	PN		
	Zirconia(Z)	Aluminum Oxide(AA)	Ceramic(CE)
#40	—	—	TB08368
#60	TA9A064	—	TB08369
#80	TB00076	—	TB08370
#100	TB00077	—	TB08371
#120	TB00247	—	TB08372
#180	TB00248	—	—
#240	TB00249	—	—
#400	—	TA9A244	—
	50 pcs./set		50 pcs./set

Belt Size 20 mm x 520 mm			
Grit	PN		
	Zirconia(Z)	Aluminum Oxide(AA)	Ceramic(CE)
#40	TA99605	—	TB08373
#60	TA99606	—	TB08374
#80	TA99607	—	TB08375
#100	TA99608	—	TB08376
#120	TA99609	—	TB08377
#180	TB00250	—	—
#240	TB00251	—	—
#280	—	TA9A252	—
#320	—	TA9A253	—
#400	—	TA9A254	—
	20 pcs./set		20 pcs./set

Belt Size 30 mm x 540 mm			
Grit	PN		
	Zirconia(Z)	Aluminum Oxide(AA)	Ceramic(CE)
#40	TB00252	—	TB08378
#60	TB00253	—	TB08379
#80	TB00254	—	TB08380
#100	TB00255	—	TB08381
#120	TB00256	—	TB08382
#180	TB00257	—	—
#240	TB00258	—	—
#280	—	TA9A262	—
#320	—	TA9A263	—
#400	—	TA9A264	—
	20 pcs./set		20 pcs./set

Dimensions (mm)



NITTO KOHKI CO., LTD.

Head Office
 9-4, Nakaikegami 2-chome, Ohta-ku, Tokyo 146-8555, Japan
 Tel : +81-3-3755-1111 Fax : +81-3-3753-8791
 E-mail : overseas@nitto-kohki.co.jp

Web www.nitto-kohki.co.jp/e

DISTRIBUTED BY

BELTON CL Type Model B-10CL/B-20CL/B-30CL

*Equipped with new motor
 20% more durable !
 (compared to current product)*



The best-selling BELTON is reborn with more POWER !!

BELTON
- CL TYPE -

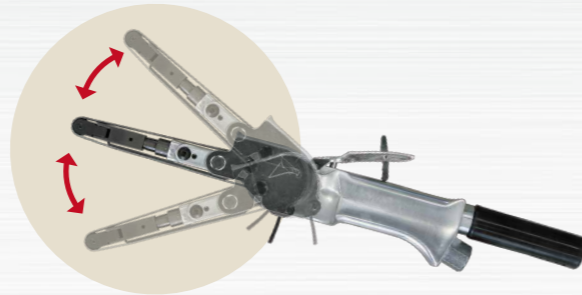
- ◇ Outer appearance updated with a high-end looking body surface finished by buffing.
- ◇ Increased motor lifetime by adopting advanced material motor vanes.



B-20CL

Adjustable angle for efficient operation

Guard angle can be changed in accordance with the working position and shape of the workpiece.



Belt Speed Adjustment

Belt speed can be easily adjusted by turning the adjust valve with a screwdriver.

Adjust Valve



Easy belt change

Abrasive belt can be changed easily.
*Rotate and open the cover when changing.

Self-locking

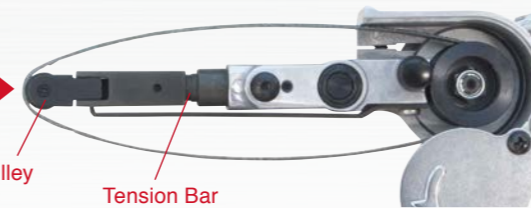
For all models

Push the idle pulley into self-lock position to loosen the belt.

Push

Idle Pulley

Tension Bar

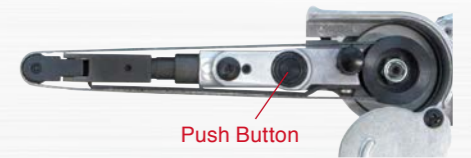


10/20 Type

Press the push button to pull back the tension bar.

Unlock

Push Button



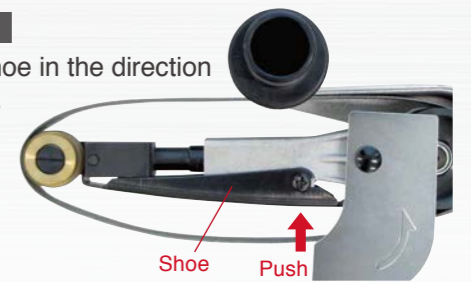
30 Type

Press the shoe in the direction of the arrow.

Unlock

Shoe

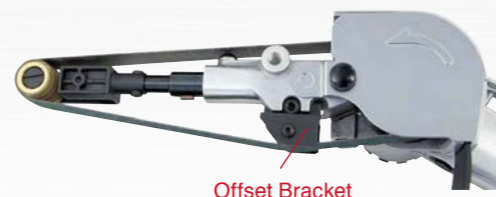
Push



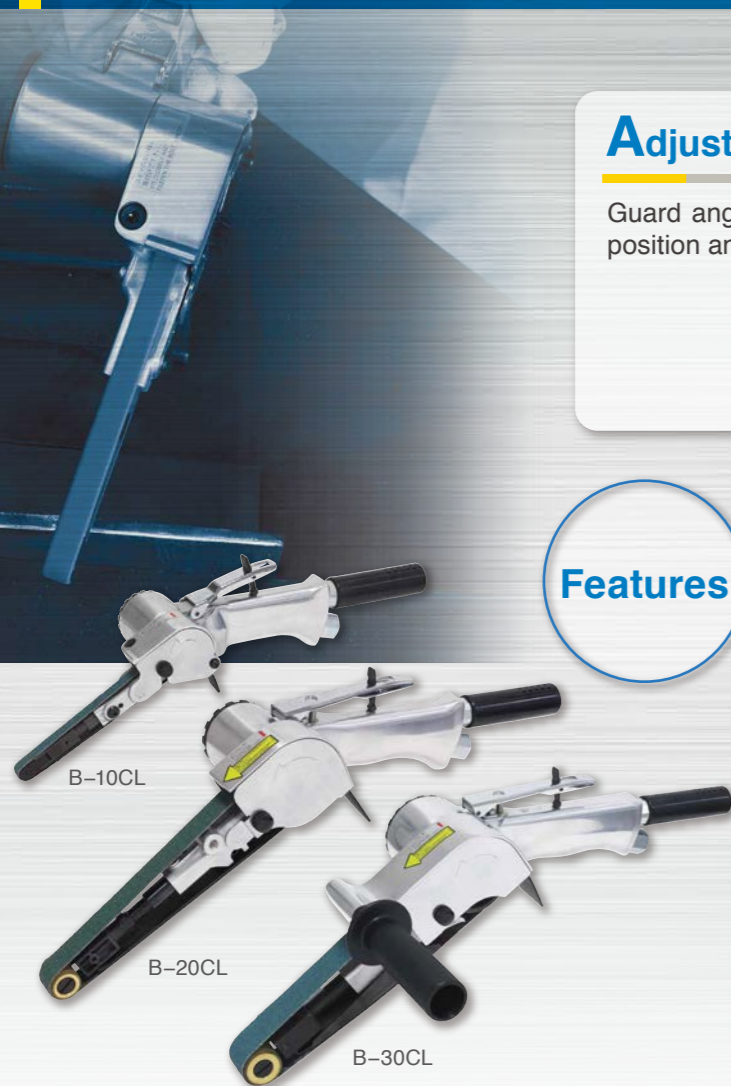
Features

Curved surface grinding

Curved surface grinding is possible by using the Offset Bracket (Optional).



Offset Bracket



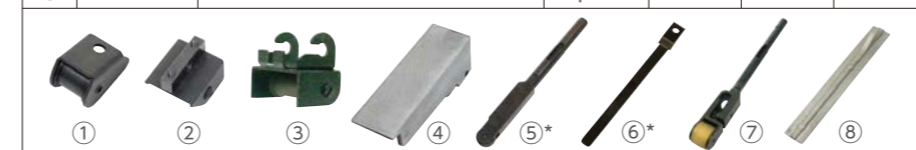
Specifications

Model		B-10CL	B-20CL	B-30CL
Air Pressure	MPa(kg/cm ²)	0.6(6)	0.6(6)	0.6(6)
Air Consumption (No-load)	m ³ /min	0.4	0.48	0.82
Free Speed	min ⁻¹	17000	18000	15000
Belt Speed	m/min	1120	2770	2310
Belt Size	mm	10×330	20×520	30×540
Mass (Weight)	kg	0.9	1.6	2.4
Vibration Level (according to ISO20463)*	m/s ²	1.21	1.32	at Grip:0.56 at Handle:1.88
Accessories Included		<ul style="list-style-type: none"> • Abrasive Belt Z #60×10 mm : 2 pieces (1 piece installed) • Abrasive Belt #80×10 mm : 1 piece • #100×10 mm : 1 piece • #120×10 mm : 1 piece • Hex. Socket Screw Key 1.5 mm, 4 mm : 1 piece 	<ul style="list-style-type: none"> • Abrasive Belt Z #60×20 mm : 2 pieces (1 piece installed) • Abrasive Belt #80×20 mm : 1 piece • #100×20 mm : 1 piece • #120×20 mm : 1 piece • Hex. Socket Screw Key 2.5 mm, 4 mm : 1 piece • Convex Shoe : 1 piece • Silencer Sub Ass'y : 1 set 	<ul style="list-style-type: none"> • Abrasive Belt Z #60×30 mm : 2 pieces (1 piece installed) • Abrasive Belt #80×30 mm : 1 piece • #100×30 mm : 1 piece • Hex. Socket Screw Key 5 mm : 1 piece • Handle Ass'y : 1 set • Silencer Sub Ass'y : 1 set

* Figures may vary depending on applications.

Optional Parts

No.	PN	Description	Sales Unit	B-10CL	B-20CL	B-30CL
①	TB09997	Offset Bracket 10 Ass'y	1 set	●		
②	TB10192	Offset Bracket 20 Ass'y	1 set		●	
③	TB08150	Offset Bracket 30 Ass'y	1 set			●
④	TB09938	Finger Pad Ass'y	1 set		●	
⑤	TB09996	Bracket 6 Ass'y	1 set	●		
⑥	TP14770	Shoe 6	1 piece	●		
⑦	TB10160	Idle Pulley Bracket A Ass'y	1 set		●	
⑧	TB10191	Convex Shoe	1 piece		●	



* for Abrasive belt width 6mm

