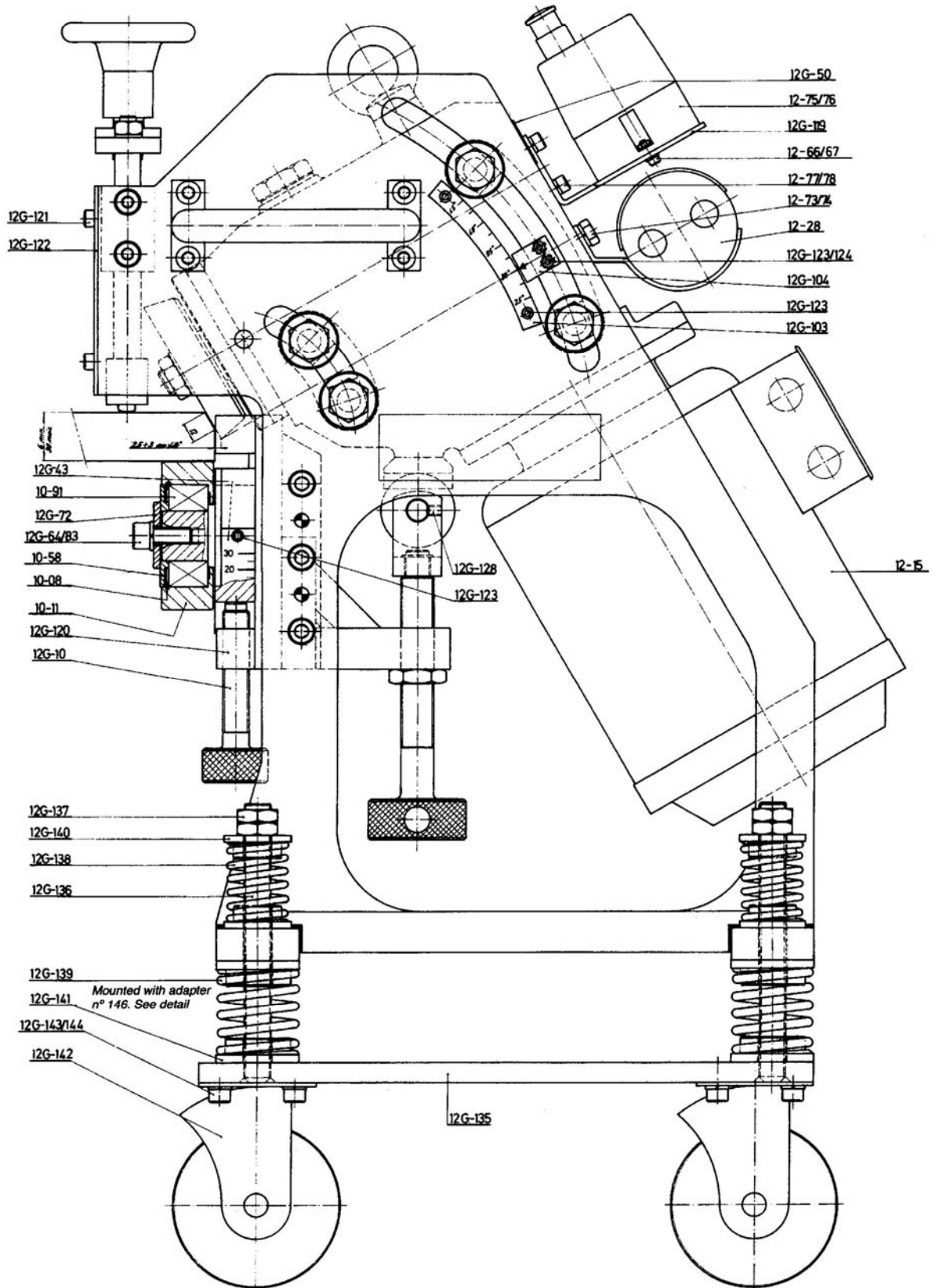
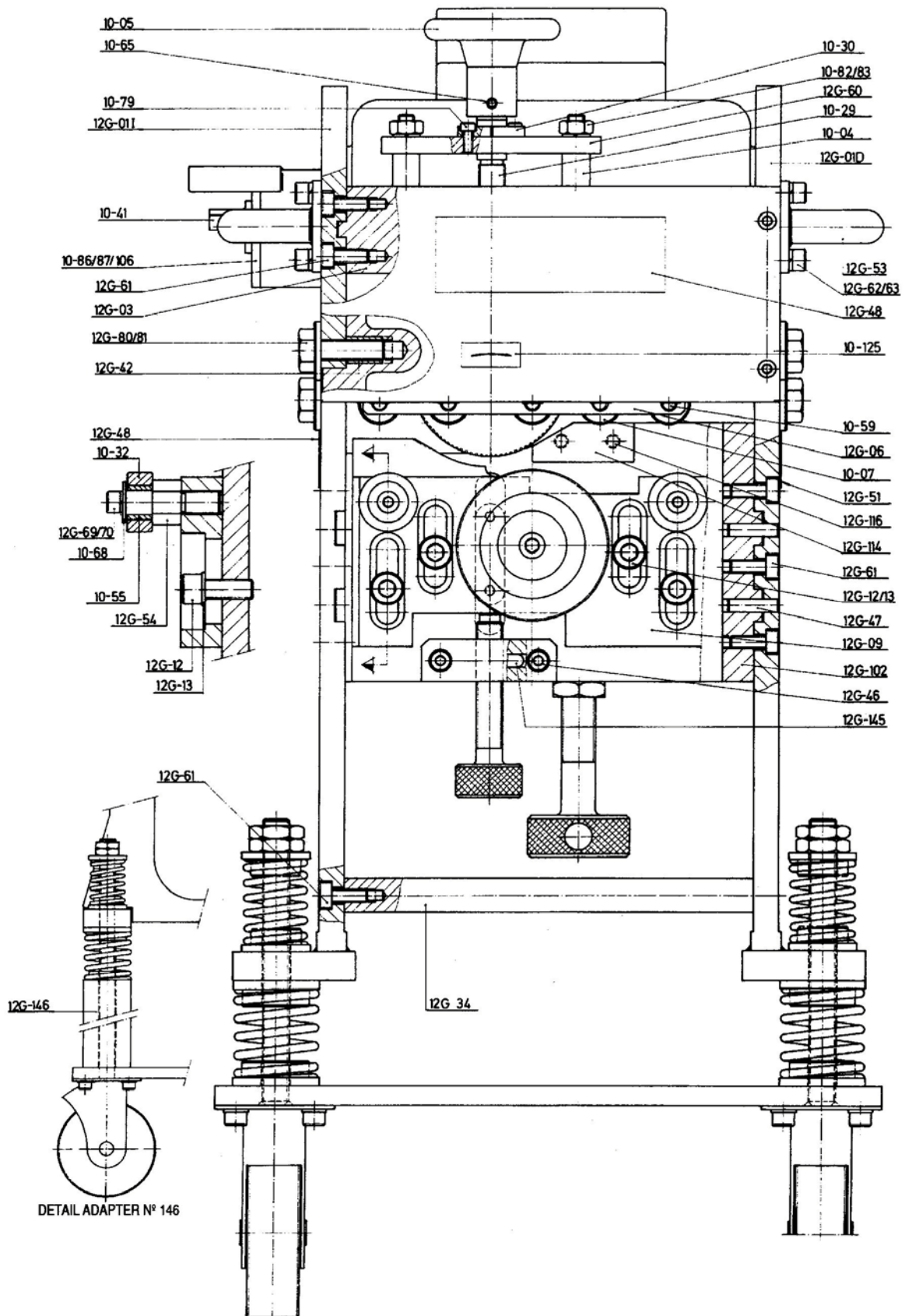
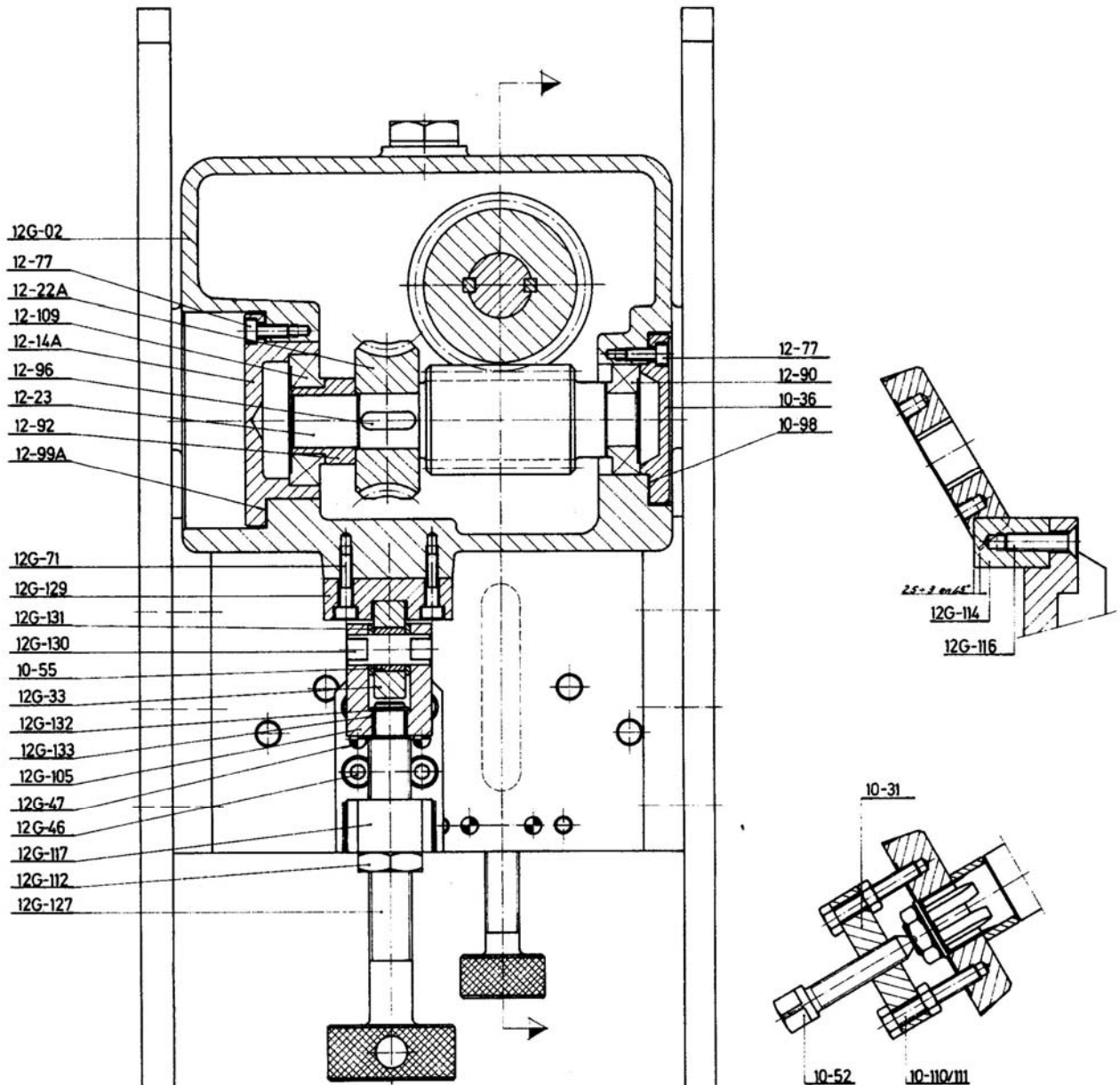


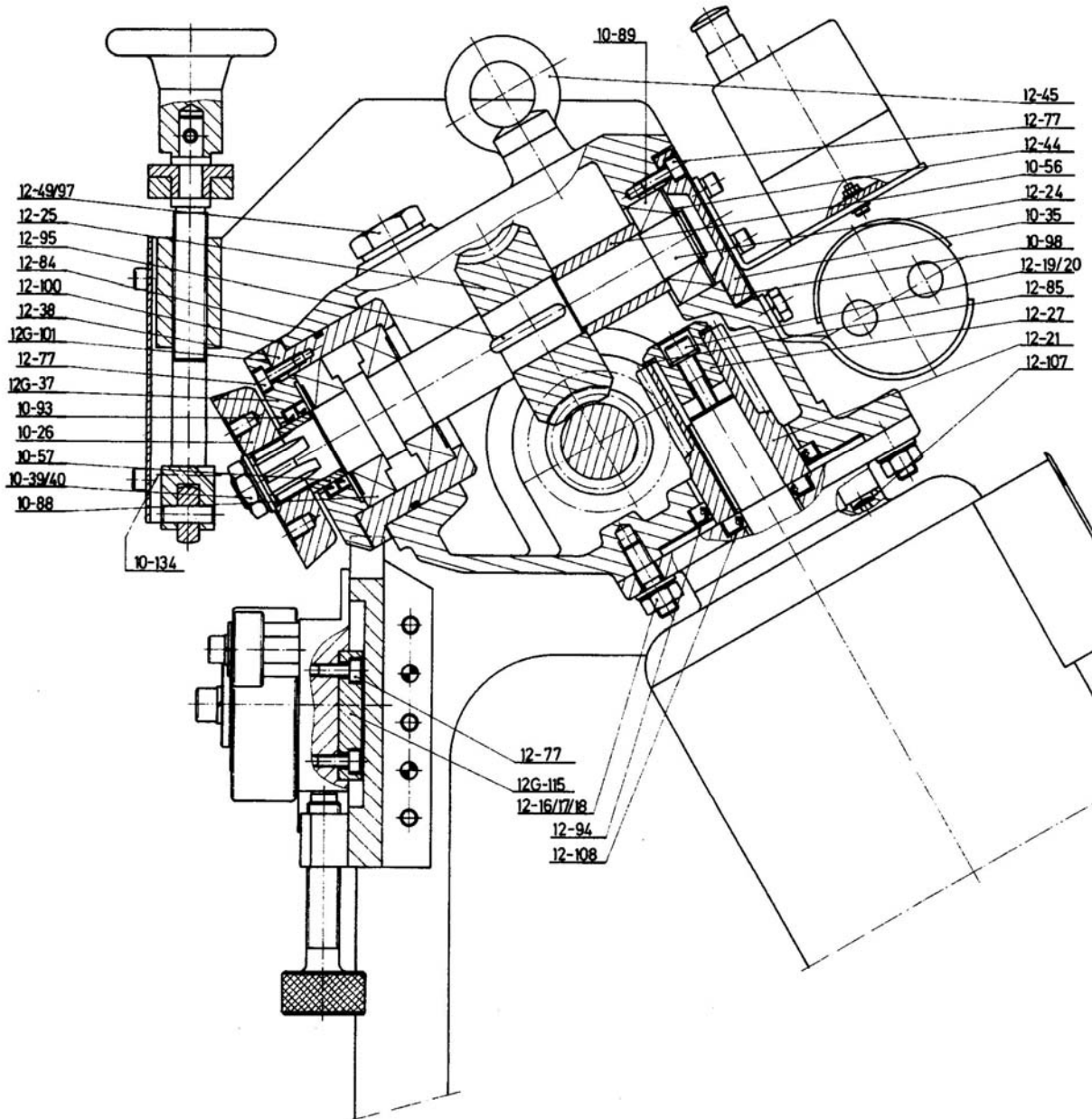
COMPLETE DRAWINGS







MILLING CUTTER EXTRACTION TOOL





SPARE PARTS AND ACCESSORIES

LIST OF SPARE PARTS OF THE BEVELLING MACHINE «CEVISA» CHP-12G

REF.	DESIGNATION	REF.	DESIGNATION
12G-01I	Left side bracket support	12G-43	Scale
12G-01D	Right side bracket support	12-49	Oil filler cap
12G-02	Housing	12G-54	Support pulley shaft (2 p.)
12G-03	Nut support	10-55	Selfoil bush (3 p.)
10-04	Guide cylinders(2 p.)	10-56	Spacer bush
10-05	Adjustment wheel	10-57	Milling tool spacer bush
12G-06	Roller-holder support	10-58	Spacer washer
10-07	Support rollers (5 p.)	12G-60	Mobile support
12G-09	Vertical slide	12-75	Electric box
12G-10	Adjustment spindle	10-88	Bearing N° 30.207 (2 p.)
10-11	Guide pulley	10-89	Bearing N° 4.205
12-14A	Side cover	10-90	Bearing N° 30.205
12-15	3 H.P. motor	10-91	Bearing N° 3.206
12-21	Input worm shaft	12-92	Bush
12-22A	Worm crown	10-93	Oil seal 35X47X6 (2 P.)
12-23	Worm shaft	12-94	Oil seal 50X68X8/8,5
12-24	Main shaft	10-98	Seal (2 p.)
12-25	Worm crown	12-99A	Seal
10-26	Milling tool	12-100	Seal
12-27	Bushing	12-101	Seal
12-28	Switchbox	12G-102	Support
10-29	Adjustment spindle	12G-105	Yoke
10-30	Secondary bush	12-108	Oil seal 25X47X7
10-31	Milling tool extractor	12-109	Bearing N° 30.206
10-32	Support pulley (2 p.)	12G-113	Rod
12G-33	Taking-in roller	12G-114	Striker pin
12G-34	Spacer shaft (2 p.)	12G-117	Turn handle support
10-35	Back cover	12G119	Electric box support
10-36	Side cover	12G-120	Adjustment spindle support
12-37	Front cover	12G122	Protection
12-38	Bearing holder bush	12G127	Turn handle
10-41	Reversing-switch		

ACCESSORIES TO BE DELIVERED WITH THE MACHINE

- 3 milling cutters, reference 1026 (one fitted on machine).
- 1 milling extraction tool.
- Set of spanners : 12-13 mm., 18-19 mm., 20-22 mm., 24-26 mm. and 30-32 mm.
- “Allen” keys : 5 mm., 6 mm. and 10 mm.
- 1 rod n° 12G-113.