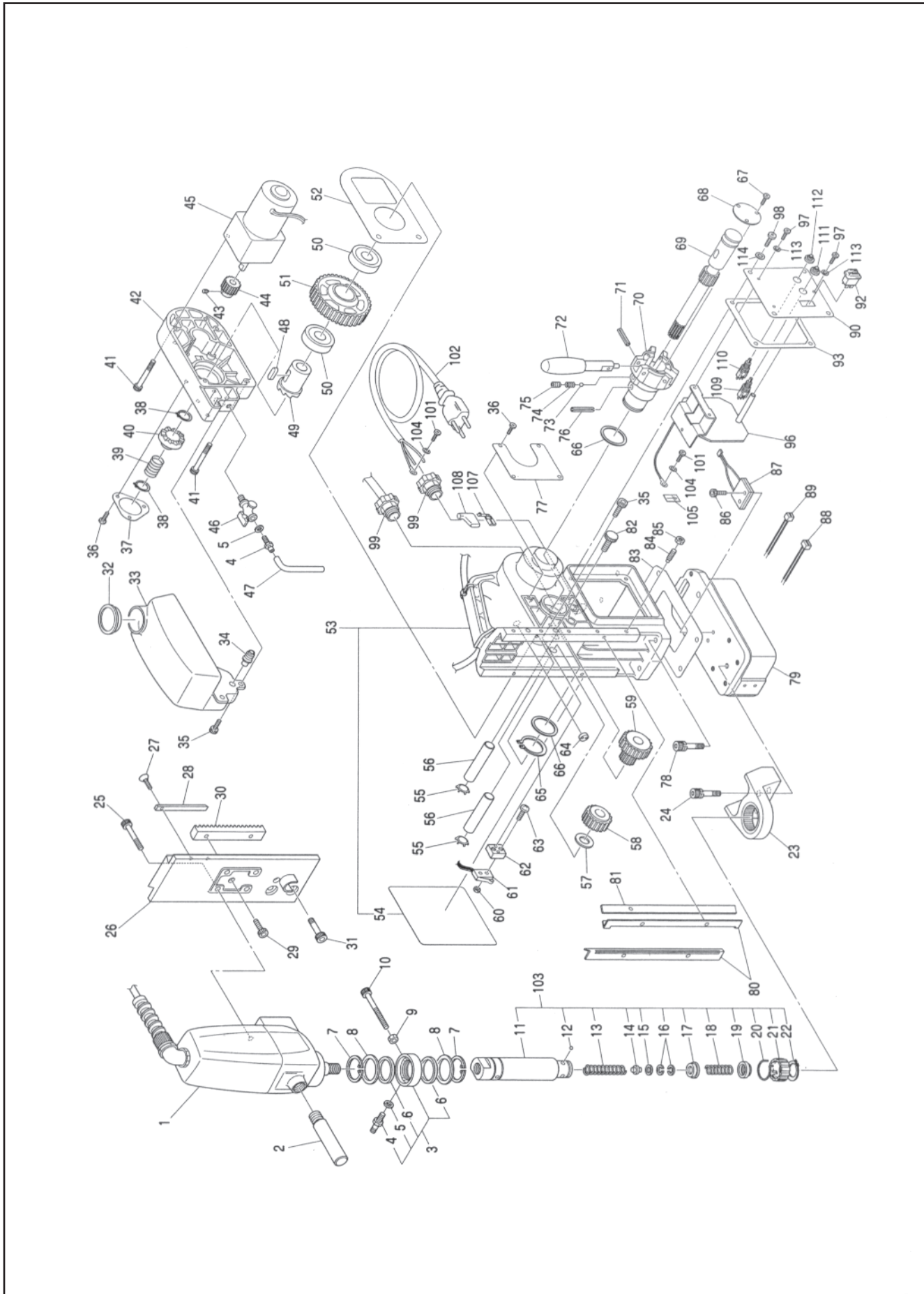


WA-3500 ASSEMBLY AND PARTS LIST (new)



The parts numbers with () are included in the Assy parts written above them.

| No. | Part No. | Part Name | Q'ty | Price |
|-----|-----------|------------------------------------|-------|-------|
| 1 | TB05117 | Drill Motor Assy (115V) | 1 set | |
| 2 | (TB05187) | Carbon Brush Assy (2 pcs/set) | 1 set | |
| 2 | TB02534 | Side Handle Assy | 1 set | |
| 3 | TB00496 | Oil Ring Sub Assy | 1 set | |
| 4 | (TP14500) | Hex Nipple | 2 | |
| 5 | (CP21947) | Seal Packing | 2 | |
| 6 | (TP14499) | Oil Seal GD38 X 48 X 4 | 2 | |
| 7 | TP14969 | Retaining Ring ISTW-38 | 2 | |
| 8 | TP12773 | Washer 38.5 X 54 X 1 | 2 | |
| 9 | LP10496 | Hex. Nut M6 | 1 | |
| 10 | TP05469 | Hex. Bolt 6 X 45 | 1 | |
| 103 | TP05121 | Arbor Body Assy One-Touch | 1 set | |
| 11 | (TO06755) | Arbor Body | 1 | |
| 12 | (TB01672) | Ball 5/16 Assy | 1 set | |
| 13 | (TP15998) | Spring 1.6 X 16.2 X 120 | 1 | |
| 14 | (TO01895) | Pilot Spacer | 1 | |
| 15 | (TP15848) | Spacer 10.5 X 19 X 5 | 1 | |
| 16 | (TP13905) | Retaining Ring RTW-19 | 2 | |
| 17 | (TB01348) | Washer Assy | 1 set | |
| 18 | (TO01898) | Spring 0.8 X 12 X 31 | 1 | |
| 19 | (TB01349) | Push Ring Assy | 1 set | |
| 20 | (TO01896) | Twist Spring | 1 | |
| 21 | (TO01897) | Sleeve | 1 | |
| 22 | (TP15239) | Retaining Ring C-28 | 1 set | |
| 23 | TB02694 | Bracket Assy | 1 set | |
| 24 | TO03344 | Hex. Socket Bolt 8 X 20 | 3 | |
| 25 | TP08013 | Hex. Bolt 5 X 25 | 4 | |
| 26 | TO06753 | Slide Board (Motor Slide) | 1 | |
| 27 | TP00112 | + Screw 4 X 10 | 1 | |
| 28 | TO06754 | Pointer | 1 | |
| 29 | TP14178 | Hex. Bolt 6 X 10 | 2 | |
| 30 | TO02496 | Rack | 1 | |
| 31 | TP14174 | Hex. Bolt 10 X 25 | 1 | |
| 32 | TO06785 | Rubber Cap | 1 | |
| 33 | TO06784 | Oil Tank | 1 | |
| 34 | TO06786 | Rubber Plug | 1 | |
| 35 | TP04715 | Hex. Bolt 4 X 8 | 5 | |
| 36 | TP12819 | + Pan Head Screw 4 X 6 | 7 | |
| 37 | TO06777 | Cover Plate | 1 | |
| 38 | TP06387 | Retaining Ring GV-16 | 2 | |
| 39 | TP06374 | Spring | 1 | |
| 40 | TP12325 | Clutch A | 1 | |
| 41 | TO06770 | Hex. Head Cap Screw 4 X 35 | 8 | |
| 42 | TO06769 | Gear Box (Feed) | 1 | |
| 43 | CP26427 | Hex. Socket Set Screw 5 X 6 | 1 | |
| 44 | TO06768 | Spur Gear 1 X 23 Feed Motor Pinion | 1 | |
| 45 | TO06767 | Gear Motor (Feed) | 1 | |
| 46 | TP14495 | Petcock Valve 1/8(PT) | 1 | |
| 47 | TB01098 | Tube 4 X 7 X 3000 Assy | 1 set | |
| 48 | TO06765 | Parallel Key 8 X 7 X 20 (Keyway) | 1 | |
| 49 | TO06763 | Clutch B | 1 | |
| 50 | TO06766 | Ball Bearing 6906ZZ | 2 | |
| 51 | TO06764 | Spur Gear 1 X 88 | 1 | |
| 52 | TO06782 | Packing for Gear Box (Gasket) | 1 | |
| 53 | TB05500 | Body Sub Assy | 1 set | |
| 54 | (TO06758) | Label -Warning | 1 | |
| 105 | (LP13557) | Earth Label | 1 | |

ACCESSORIES

| No. | Part No. | Part Name | Q'ty | Price |
|-----|----------|------------------------------|-------|-------|
| | TP04696 | Hex. Wrench Key 3 | 1 | |
| | TP17014 | Spanner 8 X 10 | 1 | |
| | UEA0835 | Pilot Pin 5/16" X 1-3/8" DOC | 1 | |
| | TA99027 | Safety Chain Assy | 1 set | |
| | TB02145 | Cutting Oil 0.5L | 1 | |
| | TB05203 | Chip Guard | 1 set | |
| | TO06799 | Instruction Manual | 1 | |

| No. | Part No. | Part Name | Q'ty | Price |
|-----|----------|---|-------|-------|
| 55 | TO04715 | Internal Retaining Ring CRTW-12 | 2 | |
| 56 | TO06776 | Shaft | 2 | |
| 57 | TO06779 | Washer 12.2 X 28 X 1 | 1 | |
| 58 | TO06775 | Spur Gear 1.5 X 26 | 1 | |
| 59 | TO06774 | Spur Gear 1.5 X 14 X 29 | 1 | |
| 60 | TP08139 | Hex. Nut M2.3 | 2 | |
| 61 | TO06771 | Limit Switch ABS5634318 | 1 | |
| 62 | TO06772 | Fixture for Limit Switch | 1 | |
| 63 | TP07784 | + Screw 2.3 X 15 | 2 | |
| 64 | TO00394 | Seal Bushing | 1 | |
| 65 | TO06781 | External Retaining Ring ISTW-32 | 1 | |
| 66 | TO06780 | Washer 32.2 X 42 X 2 | 2 | |
| 67 | TP08598 | + Screw 3 X 5 | 3 | |
| 68 | TO06762 | Plate Auto Feed (ID Plate) | 1 | |
| 69 | TO06760 | Gear Shaft | 1 | |
| 70 | TO06761 | Handle Stem (Feed Hub) | 1 | |
| 71 | TP12821 | Spring Pin 5 X 26 | 3 | |
| 72 | TO00680 | Frod Handle | 3 | |
| 73 | CP01123 | Ball 3/16 | 7 | |
| 74 | TP06396 | Spring | 3 | |
| 75 | TP06397 | Hex. Screw 6 X 8 | 3 | |
| 76 | TO06759 | Spring Pin 8 X 40 AW | 1 | |
| 77 | TO06778 | Spec. Plate (115V) | 1 | |
| 78 | TO03345 | Hex. Socket Bolt 8 X 25 | 1 | |
| 79 | TB05129 | Square Pole Assy (Magnet Assy) | 1 set | |
| 80 | TP12777 | Slide Plate | 2 | |
| 81 | TO06773 | Gib | 1 | |
| 82 | TP02931 | Set Screw | 1 | |
| 83 | TO06794 | Packing Pole (Gasket/Magnet) | 1 | |
| 84 | TO00730 | Hex. Socket Set Screw 6 X 20 | 5 | |
| 85 | TP07419 | Hex. Nut Type 3 M6 | 5 | |
| 86 | TP14471 | Hex. Socket Bolt 4 X 20 | 2 | |
| 87 | TB01363 | Slide Detection Device | 1 set | |
| 88 | TB00573 | D Cord Assy | 1 set | |
| 89 | TB05154 | F Cord Assy | 1 set | |
| 90 | TO10469 | Switch Plate (3rd) | 1 set | |
| 92 | TO07306 | Rocker Switch 6.3 1935.31 (New Bigger Type) | 1 | |
| 93 | TO06787 | Packing Body (Gasket) | 1 | |
| 96 | TB05849 | Control Board Assy (110-120V) | 1 set | |
| 97 | TP02618 | + Screw 4 X 8 | 3 | |
| 98 | TP02419 | + Screw 6 X 10 | 4 | |
| 99 | TO06795 | Cable Connector AC4-2 | 2 | |
| 101 | LP08489 | + Screw 4 X 6 | 2 | |
| 102 | TB05877 | Cable Cord Assy (Power Cord) | 1 set | |
| 104 | TP04464 | Washer M4 - Toothed Locking | 2 | |
| 107 | TO07308 | Terminal #250 42232-3 | 2 | |
| 108 | TO07309 | Sleeve 170891-1 | 2 | |
| 109 | TB07055 | Switch SW3 Assy | 1 set | |
| 110 | TB07054 | Switch SW2 Assy | 1 set | |
| 111 | TO10085 | Switch Cover (Black Rubber Cap) | 1 | |
| 112 | TO10467 | Switch Cover (Red Rubber Cap) | 1 | |
| 113 | TO00258 | Seal Washer M4 | 3 | |
| 114 | TO01331 | Seal Washer M6 | 4 | |