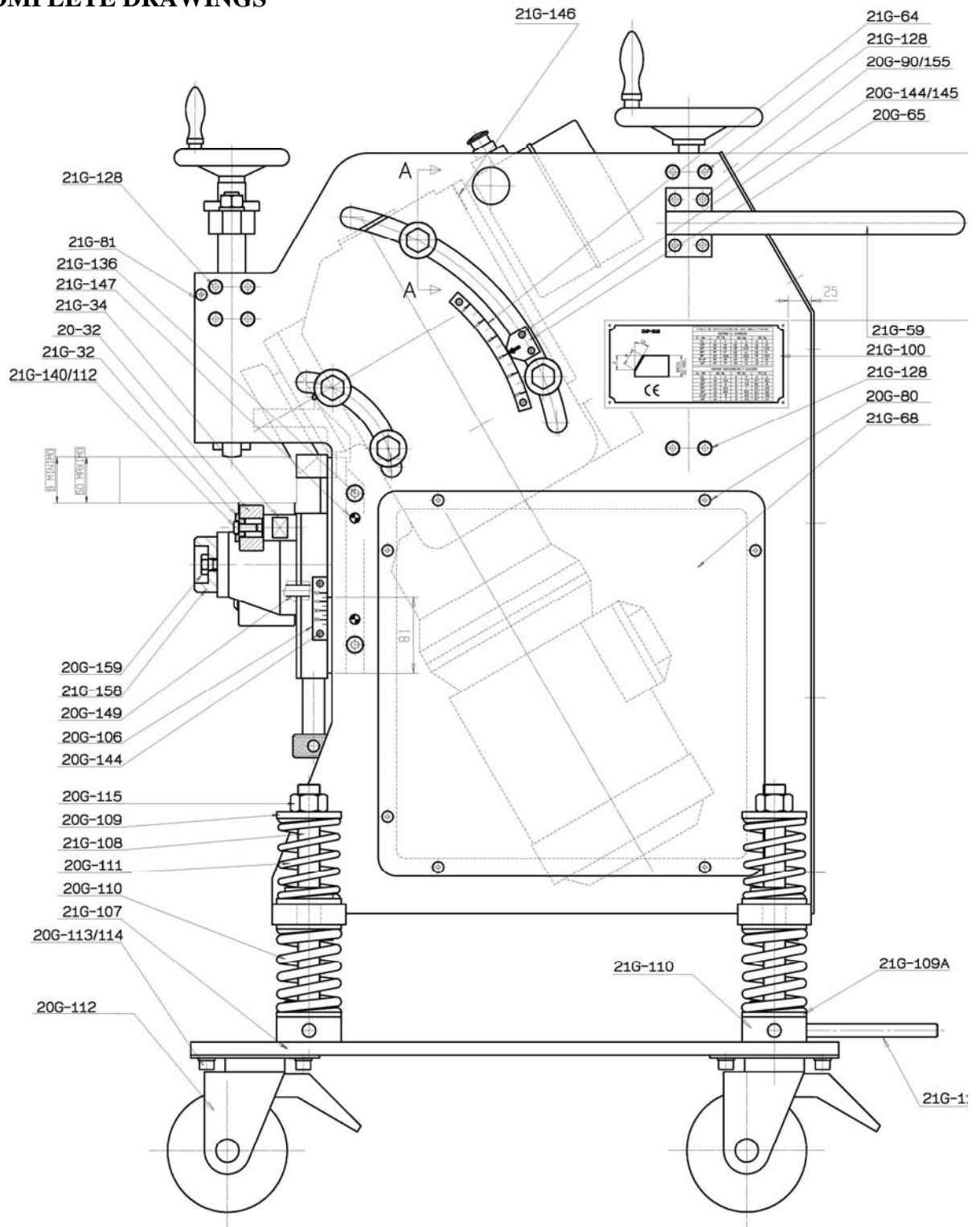
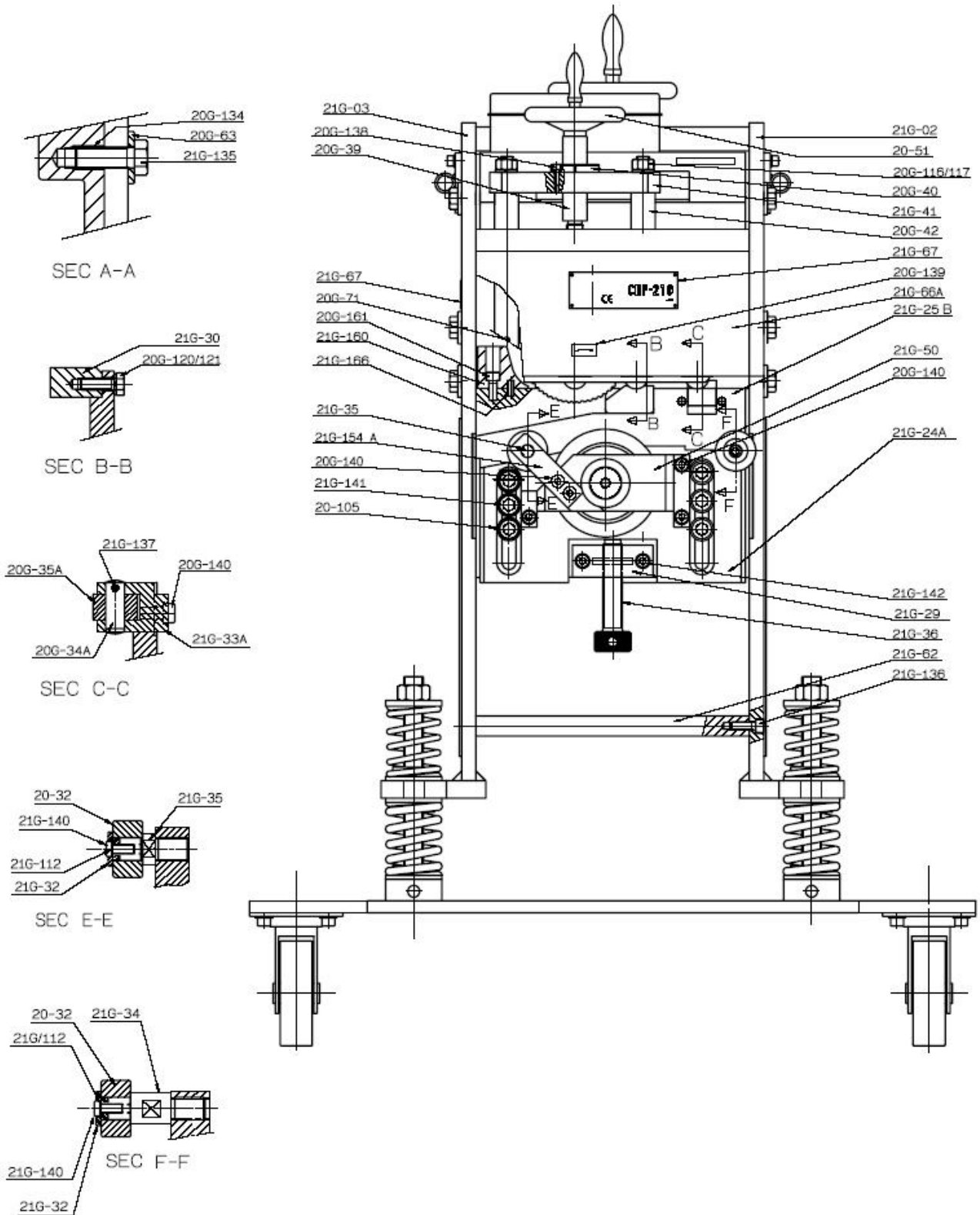
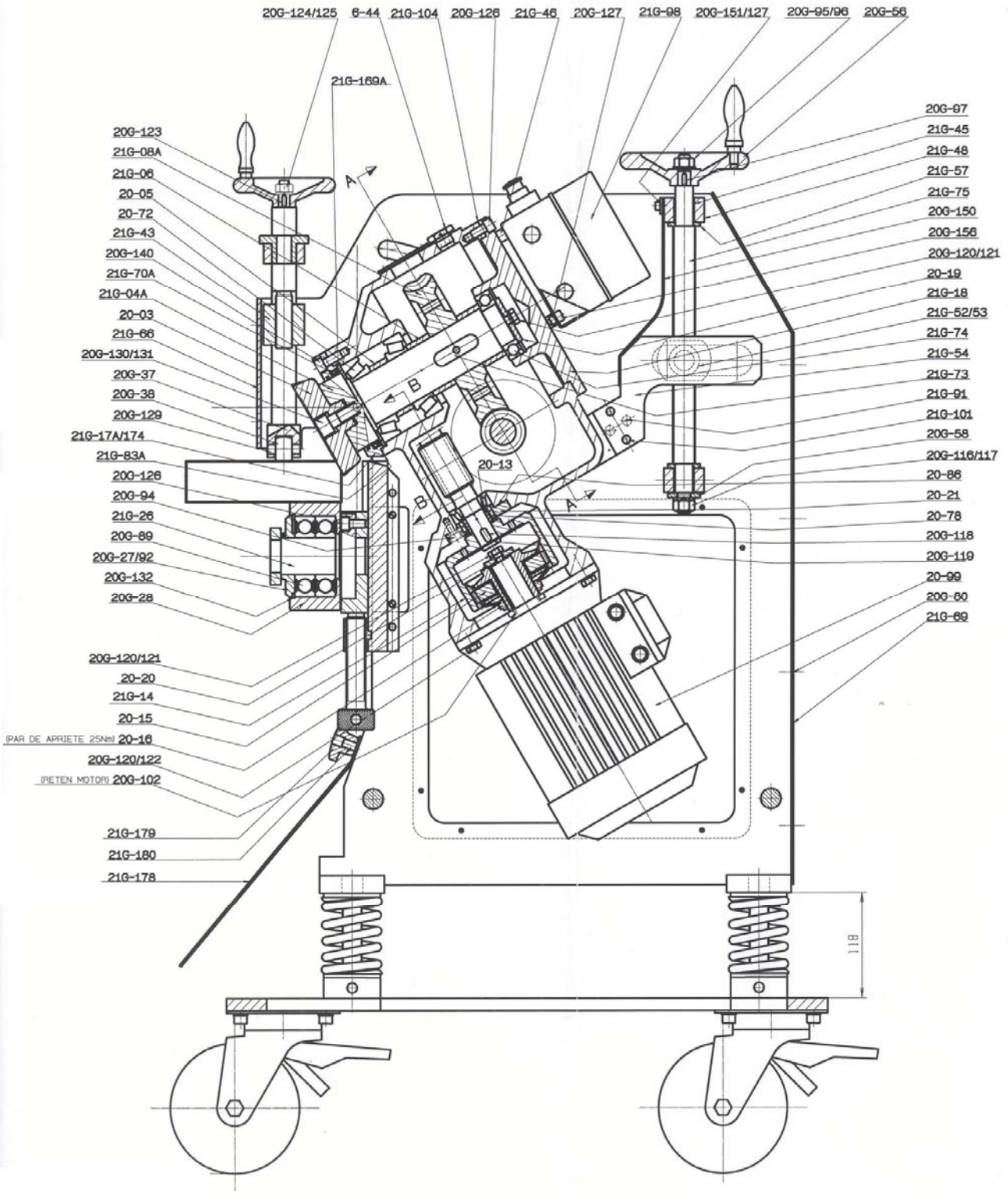
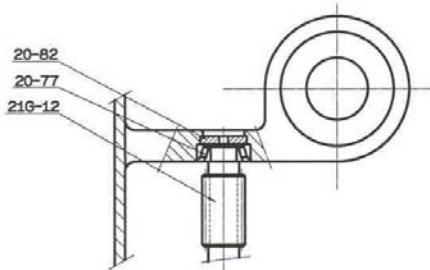


2.6. COMPLETE DRAWINGS

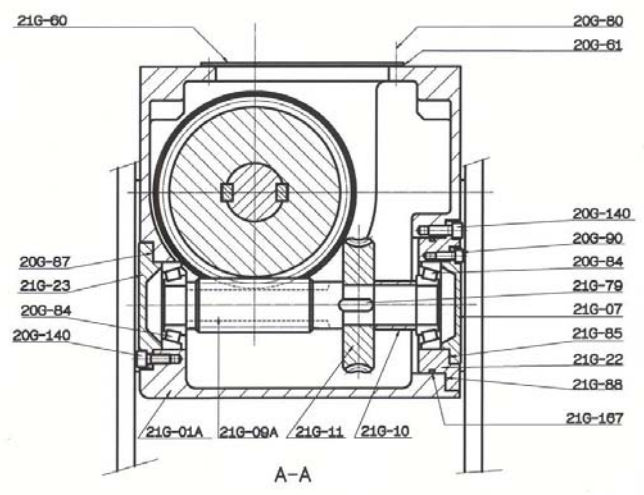




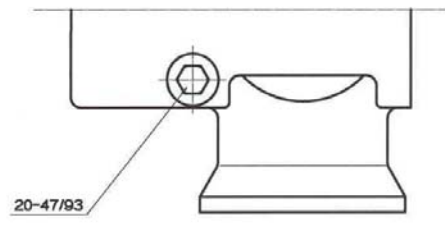




SECTION B-B



A-A





6. SPARE PARTS AND ACCESSORIES

6.1. LIST OF SPARE PARTS OF THE BEVELLING MACHINE «CEVISA» CHP-21G

REF.	DESCRIPTION	REF.	DESCRIPTION
21G-01A	Body	20G-38	Dolly rollers (4 p.)
21G-02	Left bracket support	20G-39	Regulator shaft
21G-03	Right bracket support	20G-40	Shaft fastening bushing
20-03A	Milling cutter	21G-41	Column support
21G-04A	Main shaft	20G-42	Column (2 p.)
20-05	Separator bushing (2 p.)	06-44	Oil plug
21G-06	Separator bushing	21G-45	Bushing (2 p.)
21G-07	Side cover	21G-46	Billet to fix the electric box (2 p.)
21G-08A	Worm crown gear	21G-50	Secondary pulley support
21G-09A	Worm screw spindle	20-51	Handwheel
21G-10	Separator bushing	20G-53	Bearing NKI 25/20 (2 p.)
21G-11	Worm crown gear	21G-54	Support
21G-12	Worm screw spindle	20G-56	Handwheel
20-13	Separator bushing	21G-59	Handle
21G-14	Torque limiter gear	21G-60	Oil inlet cover
20-15A	Torque limiter pinion	21G-66A	Defense
20-16A	Torque limiter (Morse type 350-1)	21G-68	Side cover (2 p.)
21G-17A	Front cover	21G-69	Back cover
21G-18	Back cover	21G-70A	Oil fastener 95 X 110 X 9
20-21	Lower cover	20-72	Tapered bearing N° 32.212 (2 p.)
21G-22	Cover	21G-74	Bearing N° 6.210
21G-23	Side cover	21G-75	Bushing
21G-24A	Vertical slide	20-77	Tapered bearing N° 30.205 (2 p.)
21G-25B	Vertical slide support	20-78	Oil fastener 32 X 45 X 6 (2 p.)
21G-26	Support pulley shaft	20G-84	Tapered bearing N° 30.308 (2 p.)
20G-28	Support pulley	20G-89	Bearing N° 6.309.2R5R
21G-29	Regulating screw support	20-93	Oil outlet lid
21G-30	Inlet spur	21G-98	Electric box
20-32	Secondary pulley (2 p.)	20-99	4 H.P. Electric motor at 1.500 r.p.m.
21G-33A	Intake roller support	20G-102	Motor oil fastener 30 X 52 X 7
20G-34A	Intake roller shaft	20-103	Special spanner for tightening torque
21G34	Secondary pulley shaft	20G-110	Lower spring (4 p.)
20G-35A	Intake roller	20G-111	Upper spring (4 p.)
21G35	Secondary pulley shaft	20G-112	Trolley wheels (4 p.)
21G-36	Regulating screw	21G-154A	Secondary pulley support
21G-37	Dolly roller support	21G-158	Tube bevelling bushing

6.2. ACCESSORIES TO BE DELIVERED WITH THE MACHINE

- 3 milling cutters (one fitted on machine).
- 1 Special spanner for tightening torque.
- 1 spanner 24-27 mm., 30-32 mm. and 32-36 mm.
- 1 “Allen” key 4 mm., 6 mm., 8 mm. and 14 mm.